



**File Name:** buffalo linkstation 1tb manual.pdf

**Size:** 1934 KB

**Type:** PDF, ePub, eBook

**Category:** Book

**Uploaded:** 3 May 2019, 13:17 PM

**Rating:** 4.6/5 from 846 votes.

**Status:** AVAILABLE

Last checked: 8 Minutes ago!

**In order to read or download buffalo linkstation 1tb manual ebook, you need to create a FREE account.**

[\*\*Download Now!\*\*](#)

eBook includes PDF, ePub and Kindle version

[Register a free 1 month Trial Account.](#)

[Download as many books as you like \(Personal use\)](#)

[Cancel the membership at any time if not satisfied.](#)

[Join Over 80000 Happy Readers](#)

### Book Descriptions:

We have made it easy for you to find a PDF Ebooks without any digging. And by having access to our ebooks online or by storing it on your computer, you have convenient answers with buffalo linkstation 1tb manual . To get started finding buffalo linkstation 1tb manual , you are right to find our website which has a comprehensive collection of manuals listed.

Our library is the biggest of these that have literally hundreds of thousands of different products represented.



## Book Descriptions:

# buffalo linkstation 1tb manual



Plug the power cord into a surge protector or power outlet. Connect the Ethernet cable to a router, hub, or switch on your network. The Ethernet cable will “click” and lock in place when inserted properly. You can now use the LinkStation’s shared folder to save files just like any other hard drive. Note With Mac OS, the LinkStation is mounted as a drive icon on the desktop, or it is displayed in the sidebar of the Finder. Plug the power cord into a surge protector or power outlet. The Ethernet cable will “click” and lock in place when inserted properly. After setup is complete, reenable the software. NAS Navigator2 starts automatically. LinkStation User Manual. You can now use the LinkStation’s shared folder to save files just like another hard drive. Note With OS X, the LinkStation is mounted as a drive on the desktop or displayed in the sidebar of the Finder. Flashing pattern varies depending on the message. Function Button The Function button initiates direct copy, dismounts USB devices, and is used to initialize the LinkStation LinkStation User Manual. Power Mode Switch AUTO Automatically powers the LinkStation on and off with your computer. Turns the LinkStation on. OFF Turns the LinkStation off. It might come off. 1 Power LED Blue LED Power on. LED is off Power off. Blinks blue During startup and shutdown. USB card readers that support multiple memory cards may not function properly. 6 Power Mode Switch AUTO The LinkStation turns on and off automatically with your PC s. ON The LinkStation boots and is operational. OFF The LinkStation shuts down. LinkStation User Manual. ON The LinkStation boots and is operational. OFF The LinkStation shuts down and turns off. You can now use the LinkStation’s shared folder to save files just like another hard drive. LinkStation User Manual. Just install NAS Navigator2 on each additional computer to access the LinkStation. The LinkStation’s shared folder opens. <http://antiaging.org.tr/dosyalar/ddx5022-manual.xml>

- **buffalo linkstation user manual, buffalo terastation user manual, buffalo nas user manual, buffalo linkstation live 1tb manual, buffalo linkstation user guide, buffalo linkstation ls210d user manual, buffalo linkstation 210 user manual, buffalo linkstation 220 user manual, buffalo linkstation 410 user manual, buffalo linkstation 1tb manual, buffalo linkstation 1tb manual download, buffalo linkstation 1tb manual pdf, buffalo linkstation 1tb manuals, buffalo linkstation 1tb manual downloads.**



Note On Mac OS, LinkStation is mounted as a drive icon on the desktop, or displayed in the sidebar on the Finder. Setup is complete. You can now use the LinkStation's shared folder to save files just like another hard drive. Once the unit has booted, you can move the Power Mode Switch back to the AUTO position. Launch NAS Navigator2. The LinkStation's name, IP address, workgroup and hard disk information are displayed on the left side of the window. Note The Web Admin interface is compatible with Internet Explorer 6.0 Service Pack 2 or later, Firefox 1.5 or later, and Safari 3 or later. With a Mac, you can open the Web Admin interface from Bonjour as described below. Doing so may result in an incomplete file that cannot be opened or deleted. If this happens, restart the LinkStation, delete the file, then retry copying the file. In such a case, it is recommended to restrict access by delegating authority. Each account on the LinkStation will have the same username and password as the user's Windows account. Register users and groups on the LinkStation. This procedure is recommended for system administrators only. Note The LSCHL LinkStation doesn't support NT Domain in the US and the EU. This procedure is recommended for system administrators only. Note The LSCHL LinkStation doesn't support Active Directory in the US and the EU. Access restrictions for shared folders on the LinkStation can only be configured from within the Web Admin interface. Note The group ID may be any number from 1000 and 1999. The optional FTP server allows users to access the LinkStation from outside of the local network. You may enable it as follows. The restrictions are not displayed for users without permissions for the share. You can connect many types of USB devices to the LinkStation, including USB hard drives, USB flash drives, singlecard card readers, digital cameras, and USB printers. USB hubs, mice, keyboards, and card readers that support 2 or more cards are not supported. <http://www.floramira.rs/images/pages/ddx6017-installation-manual.xml>



The blue LED will go out, and the USB device is dismantled. You may now unplug it safely. LinkStation User Manual. HTML, CGI scripts, images, and JavaScript are supported. A MySQL database may be installed and linked with the web server. Note The LinkStations internal clock may run at a slightly different speed from other clocks on you network, and over a long period of time your network devices may show different times. If clocks on your network vary by more than 5 minutes it may cause unexpected behavior. Shared folders cannot be accessed during the disk check. Do not turn off power to the LinkStation during the disk check. If the Power Mode Switch is set to AUTO, then the LinkStation will turn off when the disk check is finished. Do not delete these files from a Windows computer. Otherwise, you may no longer be able to access folders from the Macintosh. The Info LED on the front of the LinkStation will flash during formatting. The LinkStations shared folders cannot be accessed until the disk format is complete. You can connect a Buffalo external hard drive to the USB Port. It will appear as an additional shared folder on the LinkStation. Connect the hard drive as shown below. If the hard disk is not formatted, format it from the Web Admin interface. Formatting will delete all data on the drive. Back up any important data before formatting. You cannot read data by TeraStation. USB hubs are not supported. Only Buffalo hard drives are supported. You may now unplug it safely. If the LinkStation is off, then the USB device is already dismantled, and you can remove it safely. Power LED. Be aware that changing this folder name or deleting this folder will prevent Time Machine from using it as a backup destination. LinkStation User Manual. Select backup options. LinkStation User Manual. You've now configured a backup job. LinkStation User Manual.

If a hard disk connected to LinkStation is formatted in FAT 32 or FAT 16, the following restrictions apply You cannot back up more than 2 GB of data per file in FAT 16 and more than 4 GB of data per file in FAT 32. The total capacity of all drives is usable. This is the fastest of the LinkStation's RAID modes. Click the array you want to set. Select all available hard drives. Do not turn off the LinkStation until the array is finished. Your RAID 1 array is now complete and ready to use. Click the array you want to set. Select all available hard drives. Click the array you want to set. A RAID scan tests the RAID array for read performance. If defective sectors are found, they are repaired automatically. If your multiple drive LinkStation is in RAID 1 mode, you should run RAID scans regularly. It can also send you an email when settings are changed or an error occurs. If the LinkStation is turned back on while it's still running on the UPS battery, the UPS will not shut it down again, even if the battery runs low. The sleep timer only works when the LinkStations Power Mode Switch is ON. In standby mode, pressing the LinkStations function button or moving the Power Mode Switch to AUTO will turn the LinkStation on. You can initialize other items from the Web Admin interface. Follow the instructions displayed on the screen. Warning Formatting the

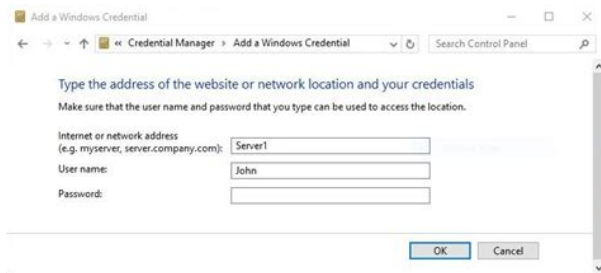
LinkStation will erase all data on the drive. Back up any important data before formatting. After a format, your LinkStation will reboot. Settings will be returned to their factory defaults. WebAccess lets you access files on your LinkStation through the Internet. Access restrictions can be set for folders that are shared, and automatic router settings by UPnP and redirect functionality from the buffalonas.com server similar to Dynamic DNS make configuration easy. You can connect a USB printer to the LinkStation as shown below. Refer to your printers manual installation instructions.



<https://www.becompta.be/emploi/02-manual-wap-settings>

You may need to install the printer driver from a software disk. Doubleclick on the LinkStations server name. Choose the manufacturer on the left and the model on the right. You may need to install the printer driver from a software disk. Doubleclick on the LinkStation's printer icon "lp". Choose the manufacturer on the left and the model on the right. Choose the manufacturer on the left and the model on the right. Download pieces of data from multiple terminals and make one file. Use the following steps to download shared files to the LinkStation with BitTorrent. LinkStation User Manual. Videos, pictures and music saved on the LinkStation can be displayed or played on TV, audio devices, game devices and other DLNA compatible network devices. DLNA Digital Living Network Alliance defines Home Network Device Interoperability Guidelines,. Screenshots are from a Buffalo LinkTheater LTH90 media player. Connect DLNA compatible devices to the network and turn them on. LinkStation User Manual. You may configure it to only play videos, pictures, and music from a specific folder. This list is distributed after each reboot and once every 60 minutes by default. You may enable the Media Server on the LinkStation as follows. To prohibit playback for a specific DLNA media player, follow the directions below. After making changes to the media files, refresh the media list as described on the previous page and restart iTunes. Map all remote shares to drive Assigns all the LinkStations shared folders as network letters drives. Refresh Refreshes list of NAS devices. Browse Shares Displays NAS Navigator2 window. Exit Exits NAS Navigator2. Doubleclick to open a share on the LinkStation. Workgroup Displays the LinkStation's workgroup. Storage Displays the total capacity of the LinkStation's hard drive, as well as the amount used. Shared Folders Displays shared folders and disks on the LinkStation. Alphanumeric characters, multibyte characters, hyphens, underscores, and spaces may be used.

<https://fufolia.com/images/bose-noise-cancelling-headphones-manual-pdf.pdf>



Do not use a symbol as the first character of the description. LinkStation User Manual. Passwords many contain up to 8 bytesUTF8. Alphanumeric character, hyphen, and underscore may be used. Target Choose the destination folder for Direct Copy. LinkStation User Manual. Users will be registered automatically External Users and listed. LinkStation User Manual. Group Members Group Displays users who are registered to a group. LinkStation User Manual. Descriptions Name DHCP If enabled, the LinkStation will attempt to get its IP address from a DHCP server on the network. Primary IP Address Set IP address. IP Address Settings Subnet Mask Set Subnet Mask. Do not use multibyte characters. LinkStation User Manual. Note The Windows Domain Controller has been assigned to be an external authentication SMB Server. It can be registered as the users of the LinkStation automatically who open the shared folder for the authentication test.LinkStation User Manual. Descriptions Name Settings LinkStation Enter a name to identify the LinkStation on the network. Names may Name contain up to 15 bytesUTF8. Alphanumeric characters, hyphens, and underscores may be used. Do not use multibyte characters. Do not Name use a symbol as the first character of the name. Depending on the size of the disk, a disk check may take many hours to complete.All data on the disk will be deleted if the drive is formatted. Back up any important data before formatting a disk. You cannot format a drive if you've scheduled a backup job. Also, do not format the drive if it's configured as the backup target of another. RAID 0 and RAID 1 modes are available.View NAS Off Subnet You can add an offsubnet LinkStation or TeraStation to the list. Note Only devices with active backup shares can be registered. If you do so, the backup job may halt with errors. In such a case, rerun the backup job. LinkStation User Manual. LinkStation User Manual.

<http://fugentechnik-koepfle.com/images/bose-owners-manual-321.pdf>



To automatically install a LinkStation a second time, use the Init button to initialize the LinkStation's configuration first. LinkStation User Manual. You can map additional shares, or map shares to different computers.NAS Navigator2 will launch. The File Security Tool will make these changes for you automatically. TurboPC TurboPC optimizes transfer speeds for hard drives by caching data in your computer's RAM. It works best when TurboCopy is also installed. Note Your LinkStation does

not benefit from TurboPC. LinkStation User Manual. The way it flashes indicates the type of error. Note If there is an error, open NAS Navigator2. It may have an error message displayed. The LinkStation will be shut down normally. After the LinkStation shuts down, ensure that power is supplied to the UPS. If there is no problem, briefly press the LinkStation's function button to reset. Do not hold down the function button too long or you may get unexpected results. Formatting the hard drive. Checking the hard drive. Initializing the system settings. Updating the firmware. Initializing the settings in the Web Admin interface. Checking a USB hard disk. Formatting a USB hard disk. LinkStation User Manual. The RAID array is being erased. Formatting the hard drive. Initializing the system settings Updating the firmware Checking a USB drive Formatting a USB hard drive LinkStation User Manual. Error code Descriptions MPU is abnormal; no power. Contact Buffalo tech support for assistance. DRAM data line is abnormal. DRAM address line is abnormal. Contact Buffalo tech support for assistance. Blinking green Accessing. AC adaptor LED Status Descriptions Green Power is connected. Power is not connected. LinkStation User Manual. USB device is dismounted lights for 5 seconds. The RAID array is being erased. Contact Buffalo tech support for assistance. LinkStation User Manual.

A shared folder does not open suddenly If you use a shared folder on the LinkStation as a network drive, you may not be able to access to the LinkStation when the IP address or the workgroup has changed. It is important to back up your data to recover data or minimize losses in such a case. NOTE For users running MacOS 10.13 or later, download and install the latest version of NAS Navigator2 from Mac App Store. Backups are also made easy with NovaStor's NovaBACKUP Buffalo Edition for PC, or TimeMachine for Mac. Thus enabling the LS520 to stop working when you do and greatly lessen its power consumption. You can access your media files via all private DLNA devices TV, game consoles, laptops, tablets, network audio players. We delete comments that violate our policy, which we encourage you to read. Discussion threads can be closed at any time at our discretion. User Manual Chapter 1. Setup. 4NAS Navigator2. 113. Chapter 4. Web Admin interface. 118 Setup. LinkNavigator Setup LSVL, LSXHL, LSCHL Page 6 Chapter1 Setup LinkNavigator Setup LSWVL, LSWXLLinkNavigator Setup LSWSXL Plug the power. Page 10 Chapter1 Setup LinkNavigator will launch. Diagrams and Layout LSVL, LSXHL, LSCHL. Front Back 3 Fan Diagrams and Layout LSWVL, LSWXL. Front Back Page 16 Chapter1 Setup. Diagrams and Layout LSWSXL. Front Back Page 18 Chapter 2 Using your LinkStation Chapter 2. Using your LinkStation. Opening the Shared Folder Page 19 Using your LinkStation. Opening the shared folder from another PC. After the LinkStation is installed on one computer, you don't. Page 20 Using your LinkStation Page 21 Using your LinkStation. Power Modes. The LinkStation can automatically turn on and off with your computers. To use this feature. Page 22 Using your LinkStation. Web Admin interface. To open the LinkStation's webbased administration interface, follow the steps below. The LinkStation's To open the Web Admin interface from a different computer, open a browser and type the LinkStation's. Page 25 Using your LinkStation.

<https://payassistinc.com/wp-content/plugins/formcraft/file-upload/server/content/files/1626c562606b16---compex-wp54ag-manual.pdf>

Adding shared folders. By default, the LinkStation includes one shared folder "share". You may add additional folders. Page 26 Using your LinkStation. Notes. Page 27 Using your LinkStation. Access Restrictions. There are several ways to restrict access to users of a LinkStation. Access restrictions for. Page 28 Using your LinkStation. Restricting access for Users and Groups on the LinkStation. You can set access restrictions for shared folders. Page 29 Using your LinkStation Page 30 Using your LinkStation. Access Restrictions on NT Domain. The LinkStation can download users, groups, and passwords from an NT Domain. Page 31 Using your LinkStation. Page 32 Using your LinkStation. Access Restrictions on Active Directory. The LinkStation can download users, groups, and passwords from an Active Directory. Page 33 Using your LinkStation Access restrictions by using

the Delegate Authority server feature. You may administer all user accounts and passwords. Page 35 Using your LinkStation A user that has been. Page 37 Using your LinkStation. Disk Quotas. Notes Page 39 Using your LinkStation. Disk space quotas for groups. To limit the space of shared folders that each group can use. Page 40 Using your LinkStation Page 41 Using your LinkStation FTP Server. By default, the LinkStation's shares are only accessible by users connected to the same network. Page 43 Using your LinkStation. To access to the LinkStation with an FTP client Page 44 Using your LinkStation. Accessing the LinkStation with an Anonymous user. To allow anonymous access to your FTP share, disable access. Page 45 Using your LinkStation. Direct Copy. Direct Copy automatically copies movie, music, and images directly to the LinkStation from a USB Adding Users. Add users as shown below. Page 48 Using your LinkStation. Adding Groups. Add groups as shown below. Page 50 Using your LinkStation. Admin Password. You may change the admin password as follows. Page 51 Using your LinkStation. Network. Jumbo Frame.

If your other network devices support it, you may be able to increase network. Page 52 Using your LinkStation Web server. The LinkStation can be used as a Web server. HTML, CGI scripts, images, and JavaScript. Page 54 Using your LinkStation. MySQL server. The LinkStation can be used as a MySQL server. A MySQL database may be installed. Page 55 Using your LinkStation. System Settings. Name, Date and Time. Configure the LinkStation's host name, date, or time as follows By default, the LinkStation. Page 57 Using your LinkStation. System Storage. Check Disk. A disk check tests the data on a drive in the LinkStation or connected. Page 58 Using your LinkStation. Note If you access a shared folder from a Macintosh computer, information files for Macintosh may Format a Drive. Be careful! Back up. Page 60 Using your LinkStation Page 61 Using your LinkStation. Adding Storage. The LinkStation has a USB connector on the back. You can connect a Buffalo external. Page 62 Using your LinkStation. To format a USB hard drive. For best results with the LinkStation, reformat the external USB drive. Page 63 Using your LinkStation. Note Page 64 Using your LinkStation. To set access restrictions on an additional hard drive. You can set access restrictions for shares on. Page 65 Using your LinkStation. Remove Disk. To remove the hard drive. If the LinkStation is powered on, dismount the USB hard. Page 66 Using your LinkStation. System Backup Time Machine is a backup program included with Mac OS X 10.5 and. Page 67 Using your LinkStation Page 70 Using your LinkStation System Backup You can back up shared folders on the LinkStation. Page 72 Using your LinkStation. You may configure a destination folder. Page 73 Using your LinkStation. If the password is set for the. Page 74 Using your LinkStation Page 76 Using your LinkStation Three backup operation modes are available. Page 77 Using your LinkStation However, folders with more than. Page 79 Using your LinkStation. RAID Arrays.

Several RAID modes are available for LinkStation models with multiple hard drives. LinkStations Note If power is turned off during a RAID rebuild, the RAID rebuild will continue when power. Page 82 Using your LinkStation. EDP Easy Data Protection. With EDP Easy Data Protection, you can create a RAID 1 array while. Page 83 Using your LinkStation RAID Scanning. LinkStations that are in RAID 1 mode support RAID scanning. A RAID scan tests the. Page 86 Using your LinkStation. System Maintenance. Email Notification. Your LinkStation can send you daily email reports. It can also send. Page 87 Using your LinkStation Page 88 Using your LinkStation. System Power Management. UPS Settings. A UPS uninterruptible power supply can automatically shut down your LinkStation in. Page 89 Using your LinkStation. Sleep Timer. To save energy, you can specify times to put the LinkStation into sleep mode, where. Page 90 Using your LinkStation Restoring Factory Defaults. To initialize the LinkStation to its factory defaults, follow the procedure below. Initialization from the Web Admin interface. You can initialize the following settings from the Web Admin interface. Page 93 Using your LinkStation. Format the LinkStation Extensions. Web Access. What is Web Access Web Access lets you access files on your LinkStation through the Internet. Access. Page 95 Using your LinkStation. Print Server. LinkStation is equipped with a USB connector on the back. You can connect a USB. Page 96 Using your



LinkStationChoose the manufacturerPage 98 Using your LinkStation. Setting up a printer on Windows XPSetting up a printer on Windows 2000BitTorrent Client. BitTorrent is a protocol for sharing files. You can download files quickly since files are. Page 103 Using your LinkStation. Enabling BitTorrent and selecting foldersPage 104 Using your LinkStation. Media Server. The LinkStation is equipped with a DLNA Media Server. Videos, pictures and music saved on. Page 105 Using your LinkStation.

Connecting to the LinkStation and playing the files. This example shows how to use DLNA compatible media. Page 106 Using your LinkStationLinkStation User Manual 105Media Server Settings. By default, the LinkStation is set to allow all videos, pictures, and music in. Page 108 Using your LinkStation. To view DLNA compatible devices connected to the LinkStationPage 109 Using your LinkStation. DLNA Media List. The LinkStation will maintain a database of videos, pictures, and music saved in its. Page 110 Using your LinkStation. If other DLNA media devices do not recognize the LinkStation. If the Media Server on the LinkStation. Page 111 Using your LinkStation. To disable playback from a specific DLNA media player. By default, the LinkStation will allow playback from. Page 112 Using your LinkStation. Troubleshooting. Problem The DLNA media player can't see media files on the LinkStation. If your DLNA media. Page 113 Using your LinkStation. Using iTunes with the Media Server. Computers on the network running iTunes can access MP3, M4A, and. Page 114 Chapter 3 NAS Navigator2 Chapter 3. NAS Navigator2. NAS Navigator2 is a utility program that makes it simple to display the Web Admin interface. Page 115 Chapter3 NAS Navigator 2. Name DescriptionsPage 116 Chapter3 NAS Navigator 2. When NAS Navigator2 is minimized to the task tray, you have the following options from its. Page 117 Chapter3 NAS Navigator 2. You can perform the following tasks from a LinkStations properties window. Menu Item Descriptions. Web Admin. Page 118 Chapter3 NAS Navigator 2. Mac OS X 10.3.9 or later. If you installed the LinkStation with the LinkNavigator CD, NAS. Page 119 Chapter 4 Web Admin interface Chapter 4. Home. The following options can be configured from the Home screen. Name Descriptions. Name Displays. Page 120 Chapter 4 Web Admin interface. Shared Folders. Name Descriptions. Page 121 Chapter 4 Web Admin interface. Name DescriptionPage 122 Chapter 4 Web Admin interface. Name Description.

Page 123 Chapter 4 Web Admin interface. Name DescriptionsName DescriptionsThis should be the same password that the. Page 125 Chapter 4 Web Admin interfaceNetwork.

<https://www.thebiketube.com/acros-02-lancer-service-manual>